

# ACCESSORIES



## MT202 - LITHIUM-ION BATTERY PACK



### RELATED ACCESSORIES *(available separately)*



MT202  
6-gang  
battery  
charger

### RELATED PRODUCTS

MT500-24T/22T



MT700-24T



#### PRODUCT CODE

### MT202 Lithium-ion Rechargeable Battery Pack

The Freeway Med-Tech MT202 Lithium-ion battery packs are for use in our Medical Grade Monitors and AIOs and offer a voltage and capacity spec of DC10.9V 7800mAh - 85Wh. Hot-swappable and featuring internal discharge circuit protection. Charge status LEDs show 4 different stages of the power cycle to aid better charging habits. Charging is supported in-monitor, or externally in our 6-bay charger. Full charge time is approx. 4.25hrs in-monitor.

#### DIMENSIONS

Height = 148.4mm Width = 88.8mm Depth = 19.4mm

#### PRODUCT ELEVATIONS

Front



W

Side



D

#### KEY FEATURES

- Hot-swappable
- 4 clear charge status LEDs
- High capacity 7800mAh per pack
- Auto short circuit protection
- Quality Samsung cells used
- Cloth tab for easy removal from monitor/AIO

## MT202 - LITHIUM-ION BATTERY PACK

### TECHNICAL SPECIFICATIONS

Item	General Parameter	Remark
Description	Freeway Med-Tech Li-ion rechargeable battery MT202 DC10.9V 7800mAh - 85Wh	353P Assembly
Cell Model	Samsung SDI 18650	
Typical Capacity	7800mAh	
Typical Voltage	10.8V	
End of Charge Voltage	12.6V	
Charge Current	0.2C	
Charging time	4.25 hours in monitor from 10% - 90%	Faster off-cart charging available using our external charger
End discharge Voltage	8.4V	
Max continuous charge	3.9A	
Maximum continuous Discharging Current	10A	
Over-discharge Voltage Protection cell	2.8V	
Over-Current Discharge Protection	13-16A	
Short circuit protection	With protection	
Dimension	148.4x88.8x19.4mm	
Weight	435g	
Operating Temperature Range	Charge 0-45C, Discharge 20-60C	



MT202 Batteries shown in a powered monitor MT700-24T (uses up to 3 packs).

### SAMSUNG

#### High quality components

Samsung SDI 18650 cells are used within our battery packs.



#### On-battery status LEDs

Clear at-a-glance visual of battery health via four LEDs.

- 4 LEDs / 75-100% charged
- 3 LEDs / 50-75% charged
- 2 LEDs / 25-50% charged
- 1 LEDs / 0-25% charged



## MT202 - 6-BAY SMART CHARGER



\*Battery packs are purchased separately.

### PRODUCT CODE

**MT202 ACC-001-596 6-Bay Smart Charger**

The MT202 6-Bay Smart Charger Kit charges the hot-swappable MT202 batteries for the MT700-24T, and MT500-24T series Medical Monitors / AIOs. The Kit includes one battery cradle, an AC-DC adapter, and a power cord.

The battery cradle features a DC-input jack, six battery slots, and six LEDs for power and charging indicators. Connect the AC-DC adapter cable to the DC-input jack and then insert the battery packs in the correct direction into each slot for charging.

After inserting the battery pack in the slot, the charging LED lights up (orange) if the battery pack is being recharged. When charging is complete or if the battery pack is already fully charged, the LED will show solid blue.

### DIMENSIONS

Height = **81.6mm** Width = **321mm** Depth = **157.6mm**

### PRODUCT ELEVATIONS

Front



Side



### RELATED PRODUCTS *(available separately)*

MT202



MT500-24T/22T



MT700-24T



## MT202 - 6-BAY SMART CHARGER

### TECHNICAL SPECIFICATIONS

I/O Ports	
DC-in	1
Charging Slot	6
Mechanical and Environmental	
AC/DC Adaptors	Input: 100 – 240V AC; Output: 19V DC, 10.52A
Dimensions (H x W x D)	81.6 x 321 x 157.6 mm
Weight	1.3kg
Regulatory	FCC Class B, CE, C-Tick, RoHS compliant
Temperature	Operation: 0°C – 40°C; Storage: -20°C – 60°C
Humidity	0% – 90% non-condensing

\*Specifications subject to change without notice.



Individual charging status LEDs

### PRECAUTIONS

1. Always exercise care when operating and handling.
2. Do not disassemble any portion of the charger and adapter as this will void any product warranty.
3. Do not use any power adapter other than the one provided with the device or acquired from the manufacturer or its partners.
4. In the unlikely event that abnormal noise, strange odour, or smoke is present, immediately disconnect all power sources. Please report the problem to your device provider immediately.



### Charging status LEDs

Clear at-a-glance visual of charging status via individual LEDs.

Blue - fully charged battery

Orange - charging battery

### INCLUDED IN THE KIT



AC-DC power adaptor with power cord

## MT101 - FULLY WATERPROOF BACKLIT KEYBOARD



### RELATED PRODUCTS *(available separately)*

MT105



MT102



MT103



PRODUCT CODE

**MT101-W-UK** Waterproof IP68 backlit keyboard featuring a Cleaning Lock Key

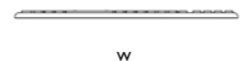
The MT101 Keyboard can be fully submersed in water, making it fantastic for clinical environments and very easy to clean for high traffic clinical use. It's fully tested to IP68 to withstand frequent disinfection and offers Freeway Med-Tech's highest infection control compliance for a keyboard. It offers ergonomic typing, with raised keys for touch type feed back and has an adjustable blue back light which make it great for use at night. It also has the ability to lock the keys for quick cleaning. Another stand out feature is its silent keys - useful for typing in areas that are noise sensitive such as at a patient's bedside.

#### DIMENSIONS

Height = 10mm Width = 380mm Depth = 130mm

#### PRODUCT ELEVATIONS

Front



Side



#### KEY FEATURES

- IP68 – designed for complete immersion in water.
- Cleaning Lock Key - pressing this key for 5 seconds activates cleaning mode that locks all keys. Press again for 5 seconds and the lock is released.
- Rubberised coating for a tactile, quiet typing surface.
- Designed to withstand water; alcohol and disinfectants.
- Adjustable backlit keys - great in dark environments or at night (can be switched on or off).
- Sold at cost price - offers the highest levels of infection prevention across a hospital, at the lowest cost!

## MT101 - FULLY WATERPROOF BACKLIT KEYBOARD

### TECHNICAL SPECIFICATIONS

Feature	General comment
Connection	Wired
Interface	USB
Dimensions	10x380x130mm (HxWxD)
Weight	720g
Cable Length	180cm
Number of keys	110
Platform	Windows, Mac and Linux
Protection rating	IP68 (fully tested to resist dust and dirt and can fully submersed in water to a depth of 1.5m for 30mins)
Lockable	Yes (5-second press to lock/unlock)
Compliant standards	CE / FCC / RoHS / IP68
Backlight	Yes - blue colour, adjustable brightness, on/off
Warranty	36 months
Operating temperature	-30°C ~ +70°C

\*Specifications subject to change without notice.



#### Cleaning Lock Key

Holding this key in for 5 seconds disables all key inputs until it is pressed again. Great for cleaning whilst the keyboard is still plugged in!



#### Backlit keys on/off

Toggle the keyboard back-light with a simple key switch. The rubber encasing ensures the unit stays waterproof regardless of the keys' up/down state.

IMAGE FAR LEFT

#### Spillages

Accidental spillages can easily be rinsed off with clean water. Even whilst the keyboard is plugged-in!



#### Fully waterproof

Not just water resistant or splash proof, this keyboard can withstand being fully immersed in water! This makes cleaning the surface extremely easy and thorough.

\*See pages 196/7 for detailed information on cleaning chemicals and procedures.



#### Backlit keys for nightwork

All keys and status icons are backlit with an adjustable blue light that can be switched on/off as required. It makes working in reduced lighting much easier and more error-free.



#### Soft silicone encased keys

Our beautifully tactile soft silicone coating not only ensures zero liquid enters the electronics inside, but it also extremely quiet and comfortable to type on.

## MT102 - COMPACT WASHABLE KEYBOARD



### RELATED PRODUCTS *(available separately)*

MT105



MT101



MT103



#### PRODUCT CODE

**MT102-W-UK** Compact Washable keyboard featuring a Cleaning Lock Key

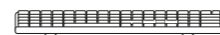
The MT102 Washable Silicone Keyboard is designed for use in medical environments and can be fully submersed in water. As it is not fully sealed, its use is not just for clinical areas but where higher volumes of typing need to be combined with the convenience of washing the keyboard under water or cleaning with Alco wipes. It's fully tested to IP68 to withstand frequent disinfection and offers the ability to wash frequently. It also has the ability to lock the keys for quick cleaning.

#### DIMENSIONS

Height = **28mm** Width = **346mm** Depth = **116mm**

#### PRODUCT ELEVATIONS

Front



W

Side



D

#### KEY FEATURES

- Cleaning Lock Key - pressing this key for 5 seconds activates cleaning mode that locks all keys. Press again for 5 seconds and the lock is released.
- IP68 – designed for complete immersion in water.
- Plug and Play via USB
- Pop-up legs to form a 6° angle
- Antimicrobial coating helps prevent bacteria build-up

## MT102 - COMPACT WASHABLE KEYBOARD



#### TECHNICAL SPECIFICATIONS

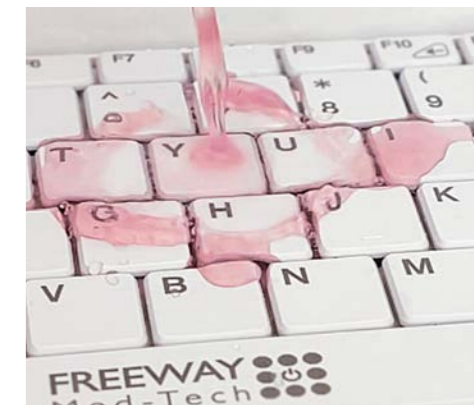
Feature	General comment
Connection	Wired
Interface	USB
Dimensions	28x346x116mm (HxWxD)
Weight	560g
Cable Length	150cm
Number of keys	90
Platform	Windows, Mac and Linux
Protection rating	IP68
Lockable	Yes (5-second press to lock/unlock)
Compliant standards	FCC / CE / RoHS / IP68 / Antibacterial
Backlight	No
Warranty	12 months
Operating temperature	-10°C ~ +55°C

\*Specifications subject to change without notice.



#### Cleaning Lock Key

Holding this key in for 5 seconds disables all key inputs until it is pressed again. Great for cleaning whilst the keyboard is still plugged in!



#### Spillages

Liquids can easily be rinsed off under a tap with clean water and wiped clean.



#### Waterproof

Can withstand being fully immersed in water at a depth of 1m for 30 minutes!

\*See pages 196/7 for detailed information on cleaning chemicals and procedures.



RELATED PRODUCTS *(available separately)*

MT105



MT101



MT102



PRODUCT CODE

**MT103-W-UK** Washable keyboard featuring a Cleaning Lock Key

The MT103 Keyboard can be fully submersed in water, as it is not fully sealed, its use is not for clinical areas but where higher volumes of typing need to be combined with the convenience of washing the keyboard under a direct water source or cleaning with Alco wipes, this MT103 is perfect. It's fully tested to IPX7 to withstand frequent disinfection and offers the ability to wash frequently. It offers ergonomic typing, with raised keys for touch type feed back. It also has the ability to lock the keys for quick cleaning.

DIMENSIONS

Height = 20mm Width = 450mm Depth = 162mm

PRODUCT ELEVATIONS

Front



W

Side



D

KEY FEATURES

- Cleaning Lock Key - pressing this key for 5 seconds activates cleaning mode that locks all keys. Press again for 5 seconds and the lock is released.
- IPX7 – A device with a level 7 water resistance rating can survive (without any damage) immersion in water of up to 1m (approx. 3ft) for 30min. All the devices with the IPX7 rating are considered fully waterproof.

TECHNICAL SPECIFICATIONS

Feature	General comment
Connection	Wired
Interface	USB
Dimensions	20x450x162mm (HxWxD)
Weight	525g
Cable Length	180cm
Number of keys	110
Platform	Windows, Mac and Linux
Protection rating	IPX7
Lockable	Yes (5-second press to lock/unlock)
Compliant standards	CE / RoHS / IPX7
Backlight	No
Warranty	12 months
Operating temperature	-30°C ~ +70°C

\*Specifications subject to change without notice.



Cleaning Lock Key

Holding this key in for 5 seconds disables all key inputs until it is pressed again. Great for cleaning whilst the keyboard is still plugged in!



Spillages

Liquids can all easily be rinsed off with clean water and wiped clean.



Waterproof

Can withstand being fully immersed in water at a depth of 1m for 30 minutes!

\*See pages 196/7 for detailed information on cleaning chemicals and procedures.

## MT105 - FULLY WATERPROOF LASER MOUSE



### RELATED PRODUCTS *(available separately)*



#### PRODUCT CODE

**MT105-W** Waterproof IP68 easy-clean laser mouse

The MT105 IP68 Laser Mouse is fully waterproof and designed for clinical use as it can be cleaned easily, using popular hospital chemicals. It's sealed to the highest IP68 standards in silicone to withstand frequent disinfection and offers Freeway Med-Tech's highest infection control compliance for a mouse. We are proud of the design and is a result of hundreds of hours of testing in NHS environments, with power needs specially customised to work with our MT700 & MT500 Powered Medical displays. Ideally suited in ICU, Theatres or any area where the risk of contamination is high, and cleaning is constant, requiring a rugged medical mouse.

#### DIMENSIONS

Height = 42mm Width = 115mm Depth = 68mm

#### PRODUCT ELEVATIONS



#### KEY FEATURES

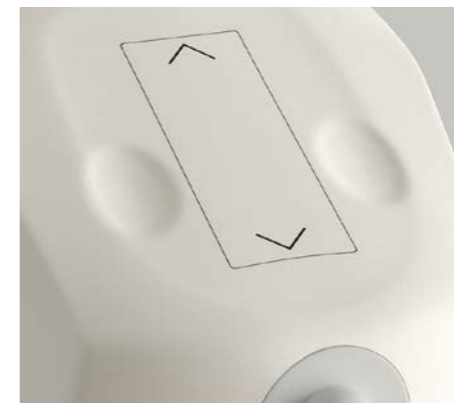
- IP68 Rating – the mouse is completely water tight and so is protected against complete, continuous immersion in water.
- Designed to withstand water, alcohol and hospital disinfectants
- Stylish design and comfortable shape to suit left or right-handed users
- Scrolling touchpad in the middle of the mouse

## MT105 - FULLY WATERPROOF LASER MOUSE

#### TECHNICAL SPECIFICATIONS

Feature	General comment
Connection	Wired
Interface	USB, PS/2
Dimensions	42x115x68 (HxWxD)
Weight	176g
Cable Length	180cm
DPI (resolution)	1000
Tracking Method	Laser
Hand Orientation	Left or Right
Platform	Windows, Mac and Linux
Protection rating	IP68 (fully tested to resist dust and dirt and can fully submersed in water to a depth of 1.5m for 30mins)
Compliant standards	CE / FCC / RoHS / IP68
Warranty	12 months
Operating temperature	0°C ~ 55°C

\*Specifications subject to change without notice.



#### Fully waterproof

The mouse can be fully immersed in water or disinfectant to ensure thorough cleaning.

\*See pages 196/7 for detailed information on cleaning chemicals and procedures.



#### Sealed operation

Both mouse buttons and the scroll wheel are completely sealed underneath the soft waterproof coating leaving no traps for dirt or water ingress.

#### Soft silicone encasing

Our beautifully tactile soft rubber coating not only ensures zero liquid enters the electronics inside, but it also extremely comfortable to hold and use.

#### Fully submersible

Easy cleaning is achieved by wiping the surface over with alcohol wipes. But, if a deep clean is required, then the unit can be submersed in water or cleaner if necessary.

## MT300 - MAGNETIC BACK-LIT TABLET KEYBOARD



NHS Supply Chain



### RELATED PRODUCTS *(available separately)*

MT300-I3T



PRODUCT CODE

### MT300 Magnetic back-lit tablet keyboard

This optional slim detachable keyboard for our powerful MT300-I3T tablet, allows the user to type more freely and quickly than if using just the tablet's touch screen alone. Better still, if paired with the tablet desktop cradle and a large separate monitor, a true 'desktop' PC experience can be achieved. The keyboard's bright back-lit keys make using it in dimly-lit or late-night ward environments, a much easier task compared with a standard keyboard.

Other great features are the magnetic hinge which magically grip the tablet and helps to locate the electronic contacts ensuring an instant connection - no need for a potentially troublesome bluetooth or wireless 'pairing'. Plus, when the keyboard is in the closed position, it completely covers and protects the tablet's advanced capacitive touch screen!

### DIMENSIONS

Height = 217mm Width = 319mm Depth = 9mm

### PRODUCT ELEVATIONS

Front



W

Side



D

### KEY FEATURES

- Bright back-lit QWERTY keyboard
- Physical electronic (instant) connection with tablet
- Magnetic hinge grips tablet's connecting edge
- Ultra slim design

## MT300 - MAGNETIC BACK-LIT TABLET KEYBOARD

### TECHNICAL SPECIFICATIONS

I/O Ports	
Magnetic hinge connector	A physical connection for all data and power
Mechanical and Environmental	
Dimensions (H x W x D)	217 x 319 x 9 mm (exc. hinge connector)
Weight	0.6kg

\*Specifications subject to change without notice.

### Magnetically secured. Physically connected.

The removable keyboard is attached to the MT300 tablet via magnets within the hinge connector, also where the electronic contacts are housed. These gold contacts make a physical connection thereby ensuring the keyboard is 'live' as soon as they touch. No need to wait for pairing and connection as on bluetooth devices. No separate battery or power source is required to use the keyboard.



### Easily attach.

Simply move the lower edge of the tablet towards the connector and it will magnetically 'grab' the bar into position.

### Flexible.

The silicone interconnect allows the keyboard to move independently of the tablet and effortlessly close.

### Magically held closed.

Strategically placed powerful magnetics hold the keyboard against the tablet when not in use.

### A screen protector too.

When closed, by default the keyboard offers complete protection for the tablet's screen!





## MT-ACC-00872HMDA- TABLET DESKTOP CRADLE



### RELATED PRODUCTS *(available separately)*

MT300-13T



### TABLET-TO-DESKTOP SETUP



PRODUCT CODE

**MT-ACC-00872HMDA** Tablet desktop cradle

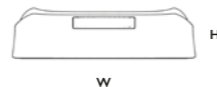
Quickly convert the MT300-13T tablet PC into a desktop PC with this optional desktop cradle. An aesthetically designed outer casing effortlessly holds our tablet and keeps it sturdy and secured. The tablet is always charging whilst in the cradle and with its expansive I/O, connectivity to screens, keyboards, printers and many other peripherals is never a problem. A high grip and weighted underside keep the cradle from being accidentally moved or knocked over. Extra USB ports on both sides of the cradle make plugging-in the odd storage device or phone charger a swift experience without the need to see behind the unit.

### DIMENSIONS

Height = 50mm Width = 182mm Depth = 150mm

### PRODUCT ELEVATIONS

Front



Side



### KEY FEATURES

- Great connectivity including accessible side USB ports
- RJ45 Ethernet socket allows reliable high speed network access when tablet docked
- Tablet is always charging whilst docked
- Weighted high-grip safety base

## MT-ACC-00872HMDA- TABLET DESKTOP CRADLE

### TECHNICAL SPECIFICATIONS

I/O Ports	
USB	x4 USB 2.0 (2 on rear panel, 2 on sides)
HDMI	x1 (on rear panel)
Ethernet (RJ45)	x1 10/100/1000 Gigabit port (on rear panel)
DC-in	x1
Mechanical and Environmental	
Dimensions (H x W x D)	50 x 182 x 150mm
Weight	682g

\*Specifications subject to change without notice.



### Accessible USB

Both sides of the desktop cradle feature USB ports for peripherals that maybe aren't always plugged in.



### Secure weighted base

There's no accidentally knocking the cradle over or off a desk with its high-grip weighted underside.



### Ample connectivity options\*

With a plentiful supply of ports on both the rear and sides of the cradle, getting connected with peripherals and devices is never a problem.

\*See table opposite

### Comprehensive I/O

The cradle features plenty of ports on both the rear and sides of the unit.

Note the power supply unit does not come with the cradle as standard. The tablet's PSU can be used or another one can be purchased separately.

# THE FREEWAY EASY ROLL-OUT

## From pallet to switching on, in under 5 minutes.

We pride ourselves in this unique delivery service, where an iWOW® can be unboxed and commissioned in less time than it takes to make a cup of tea!

Our iWOW®'s come pre-built, pre-cabled and with all IT accessories pre-installed where applicable. There's no need for the hospital's in-house IT or engineers to setup any equipment before installing their software and licenses.

Furthermore, we use around 75% less packaging than other manufacturers and take all of what is used, away with us upon completion of the 'easy roll-out'.

### Protected ✓

All iWOWs are delivered by our own transport and decanted by our own staff. This ensures a seamless process between our factory and the customer which leads to less damage and/or delays.



### Pre-built ✓

iWOWs arrive fully built and with only minor elements of protective packaging in place for transit.



### Pre-cabled ✓

All necessary cabling is installed at the factory leaving no room for error on-site.

It may seem like a trivial element, but anecdotally, this really does save time and costly errors compared with it being done on-site when often being rushed.



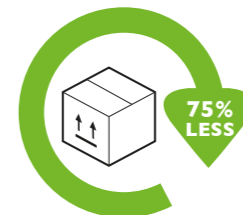
### IT Pre-installed ✓

All accessory equipment can be pre-installed ready to go ensuring commissioning the iWOW® is a very quick process.



### Less packaging ✓ More recycling ✓

We strive to be greener and forward-thinking regards our packaging, which is why we use much less than other manufacturers with similar products. We also take away and re-use, where possible, the protective transit packaging.



### Dedicated transport ✓

The customer can always be safe in the knowledge that their new equipment will arrive undamaged.



# PRODUCT CLEANING AND USE OF

## How often can I clean my iWOW®?

You can clean your medical grade cart and Monitor as often as required. All health care institutions will have a recommended minimum frequency for routine cleaning of various items within their facility. This may be weekly, daily or after each use depending on the risk

involved. Please refer to the table opposite for all safe-use chemicals.



## Cleaning the Freeway Med-Tech Medical Grade Monitors and AIO PCs for better infection control

**Step 1.** Freeway Med-Tech recommend the use of healthcare disposable alcohol based anti-bacterial wipes only on the electrical equipment (approx. 70% alcohol) – such as commonly used Clinell Green Wipes.

**Step 2.** It is recommended wiping from the front of the screen first in a top to bottom motion and then finish across the bottom (the front panel is IP65 Rated). This methodology is designed to minimise the amount of streaking on the screen and reduce excess moisture collecting on the lower front screen bezel, reducing the risk of moisture entering via the lower I/O, remembering to clean the lower OSD keys in the lower right hand corner. After the front Screen has been cleaned, dispose of this wipe.

**Step 3.** With a fresh Wipe, clean the rear of the AIO PC (the rear panel is IPX2 rated). To clean the screen of AIO PC for general house keeping - use either a microfibre cloth with an alcohol based cleaning spray (approx. 70% alcohol) or disposable alcohol based cloth.



All monitor/AIO front panels are IP65 Rated

# INDUSTRY CHEMICALS

## Suitable Cleaning Chemicals

Given the vast range of cleaning products on the market, it is not possible to list all acceptable brands. We can however, confirm that our products are compatible with cleaning products containing the following chemicals or are from popular cleaning brands. Should you require confirmation of suitable products that are not listed, please contact us with the relevant product data sheet and we will confirm suitability with our in-house specialist.

Cleaner	Brand
Viraguard®	Veridien
Sani-Cloth® HB	PDI
Sani-Cloth® PLUS	PDI
Super Sani-Cloth®	PDI
CaviWipes™	Metrex
Super HDQ®L 10	Spartan
Cloro-Wipe Towelette	Surgipath
Healthcare Hydrogen Peroxide Wipes	Clorox Healthcare®
Virex®	Johnson
70% Isopropyl Alcohol	Multiple suppliers
Alcohol Prep Pads	PDI, others

### Suitable generic chemicals:

- Alcohol (Ethyl or Isopropyl) Solutions\*
- Alcohol Wipes (Ethyl or Isopropyl)\*
- Hydrogen Peroxide Solutions\*

### Cleaning procedure for nylon modified polyester coated surfaces:

- Painted surfaces should be cleaned using a soft damp non abrasive cloth and polished dry
- Continual exposure to wet conditions is likely to result in rusting/or the paint lifting.  
**ALWAYS DRY THE SURFACE AFTER CLEANING**
- Continual use of cleaning products may result in a dulling of the surface.
- DO NOT use solvents, bleach, abrasives, synthetic detergents, wax polishes or aerosol sprays unless otherwise listed in the above list.



\*Solutions must ALWAYS be diluted in accordance the with manufacturer's instructions for use on medical products/furniture.

\*The application of the cleaning solution MUST be in accordance the with manufacturer's instructions for use on medical products/furniture.

**Freeway Med-Tech**

Unit 14,  
Colthrop Business Park,  
Colthrop Lane, Thatcham,  
Berkshire, RG19 4NB.

**Tel:** 01635 866 717

**Fax:** 01635 866 347

**Web:** [freewaymedtech.com](http://freewaymedtech.com)

**Email:** [sales@freewaymedtech.com](mailto:sales@freewaymedtech.com)